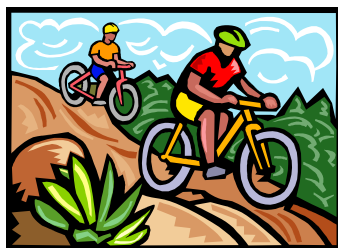


THE FIRST LORD WHISKY CYCLO-SPORTIVE



The first Lord Whisky Cyclo-Sportive will take place on Bank Holiday Monday 31st May 2010. You can ride distances of 80kms (50 miles) or 116kms (72 miles), over part of the North Downs, with some of the best rolling countryside in Kent. You will also ride over the quiet flat roads of Romney Marsh. There are a few hills, to keep the climbers happy. One climbs 102 meters in just over 1km. Some have been used in the past when the Tour de France came to Kent. There will be a feed station on route. All finishers will receive a commemorative mug. Refreshments and food will be available all day. The event will start and finish at the Park House Animal Sanctuary in Stelling Minnis. Weekend camping available at the Sanctuary on request. Riders can start from 9.30 a.m. in groups up to twelve. All riders will be timed and results sheets available. The entry fee is only £12 in advance! Entry on the day will be £17.

All proceeds will go to the Lord Whisky Sanctuary Fund a registered charity. (No. 283483)
If you want any more information, contact the organiser Nick Marsh on 07929709173 or e-mail
nickracingsnake@btinternet.com

For more information about the charity and it's work, go to the website www.lordwhisky.co.uk
Entry forms are available here or from the Lord Whisky tearooms in Rhodes Minnis, you can also receive one by E-mail if contact the organiser or please send SAE to

*Lord Whisky Cyclo-Sportive, Park House,
Stelling Minnis, Canterbury, Kent CT4 6AN*